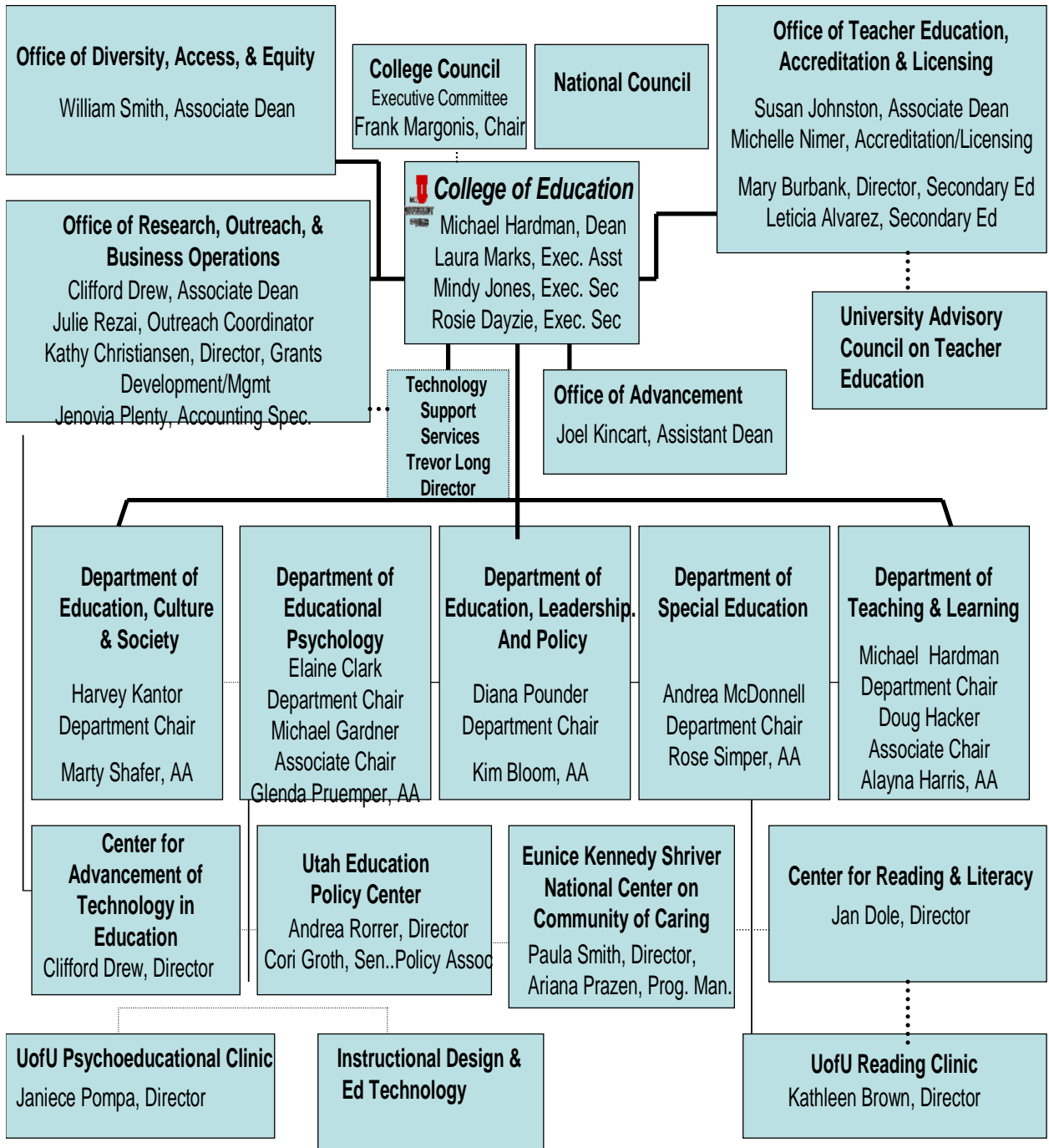


# College of Education Organizational Chart



**2007-2008 College of Education  
Leadership Team**

*Office of the Dean*

**Michael Hardman, Dean**

**Clifford Drew, Associate Dean, Research, Outreach, & Business Mgt.**

**Susan Johnson, Associate Dean, Teacher Education**

**William Smith, Associate Dean, Diversity, Access, and Equity**

**Joel Kin cart, Assistant Dean, Major Gifts and Scholarships**

**Mary Burbank, College Director, Secondary Education**

*College Council*

**Frank Margolis, Chair, College Council Executive Committee**

*Department Chairs*

**Elaine Clark, Educational Psych. (Mike Gardner, Assoc Chair/Alternate)**

**Doug Hacker (Assoc Chair & T&L Representative) & Mike Hardman**

**Harvey Kantor, Education, Culture and Society**

**Andrea McDonnell, Special Education**

**Diana Pounder, Educational Leadership and Policy**

*College Centers*

**Janice Dole, Director, Utah Center for Reading and Literacy**

**Clif Drew, Director, Center for Advancement of Education Technology**

**Andrea Rorrer, Director, Utah Education Policy Center**

**Paula Smith, Director, Eunice Kennedy Shriver National Center  
for Community of Caring**

*Office of Technology Support Services*

**Trevor Long, Director**

*College Leadership Team Executive Assistant*

**Laura Marks, College Executive Assistant**